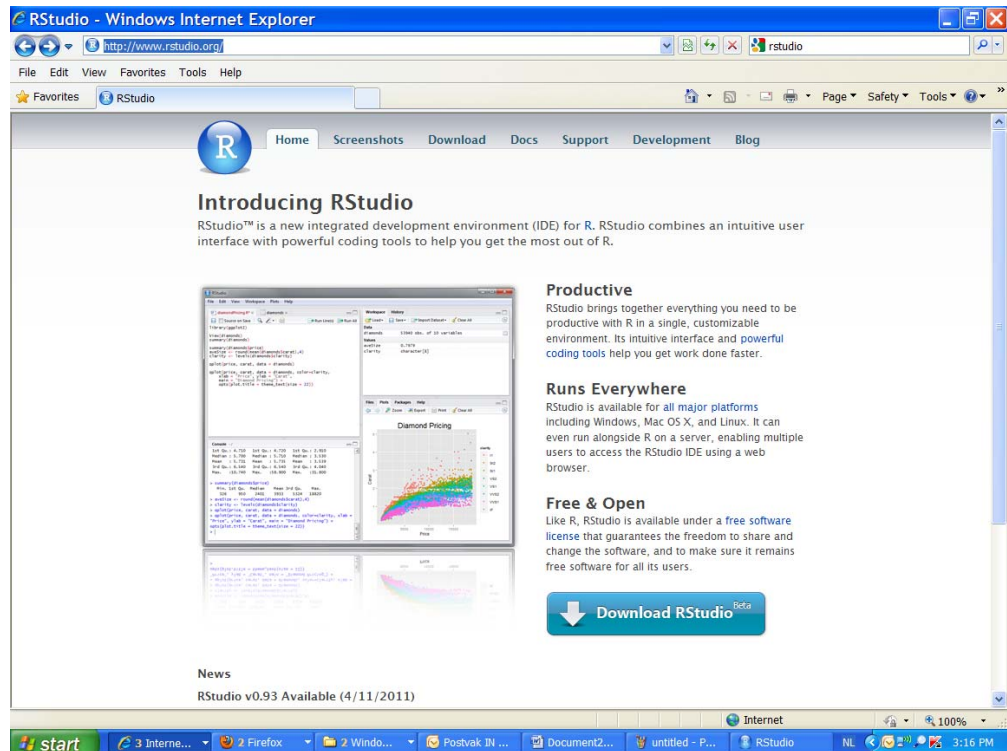


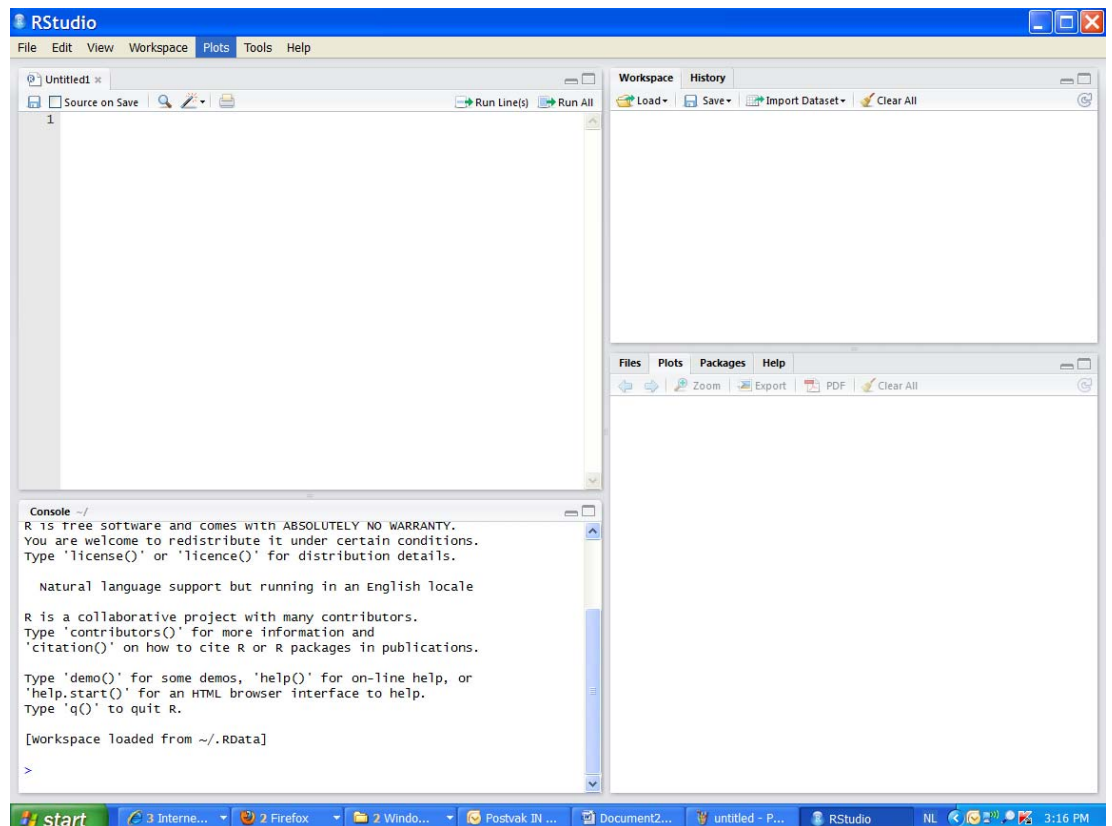
## 2b: How to open R studio

Although you can directly work in R, it is also possible to use a free interface that is meant to make R easier for people who are used to spreadsheets or to SPSS. This interface is called **RStudio**.

Go to <http://www.rstudio.org/> and download the version you need for your system:



For Microsoft Windows it looks as follows:



This gives you four windows to view various aspects of your data analysis. If you don't like this type of environment, everything we do with RStudio can easily be implemented in R as well. The commands are the same.