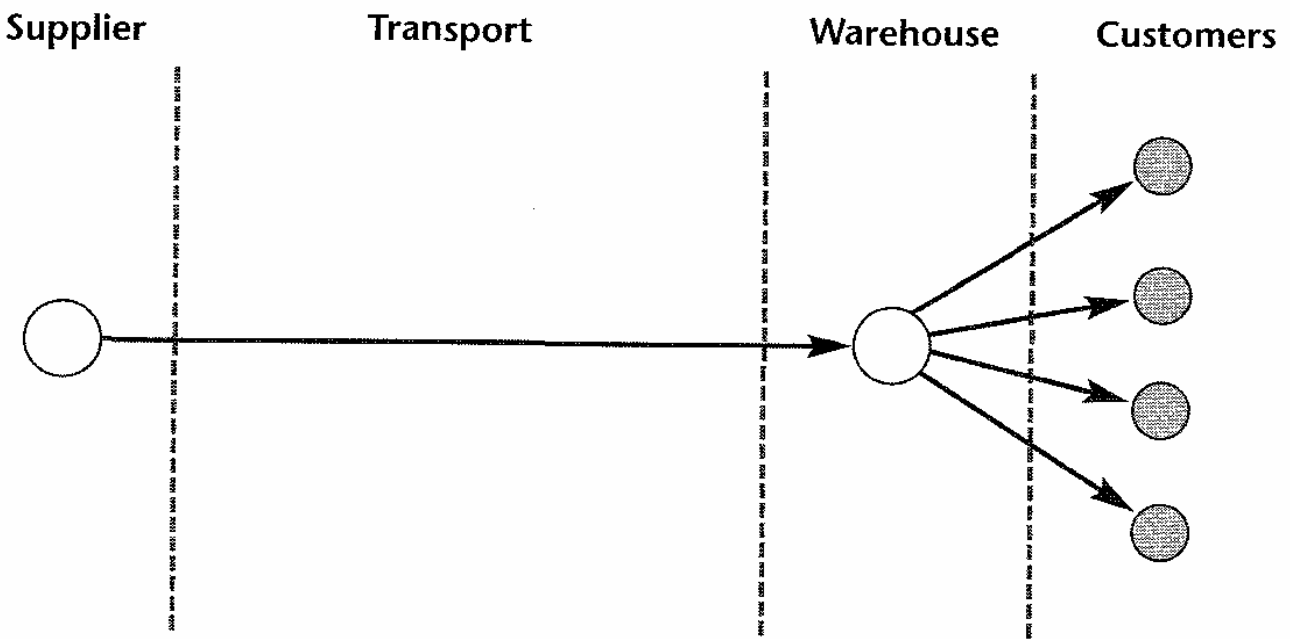


(a) Consolidation



(b) Break-bulk

Figure 12.1 Using a warehouse to sort materials and reduce transport costs

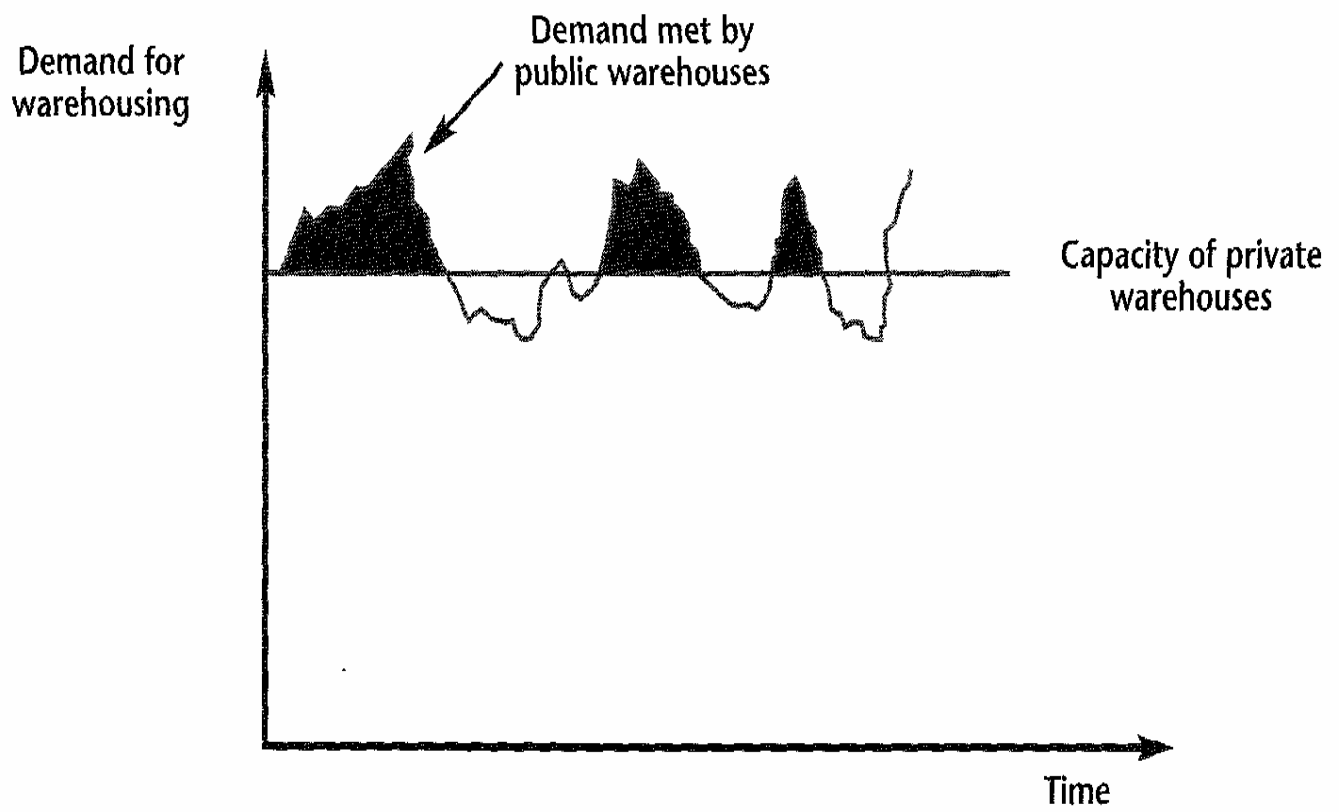
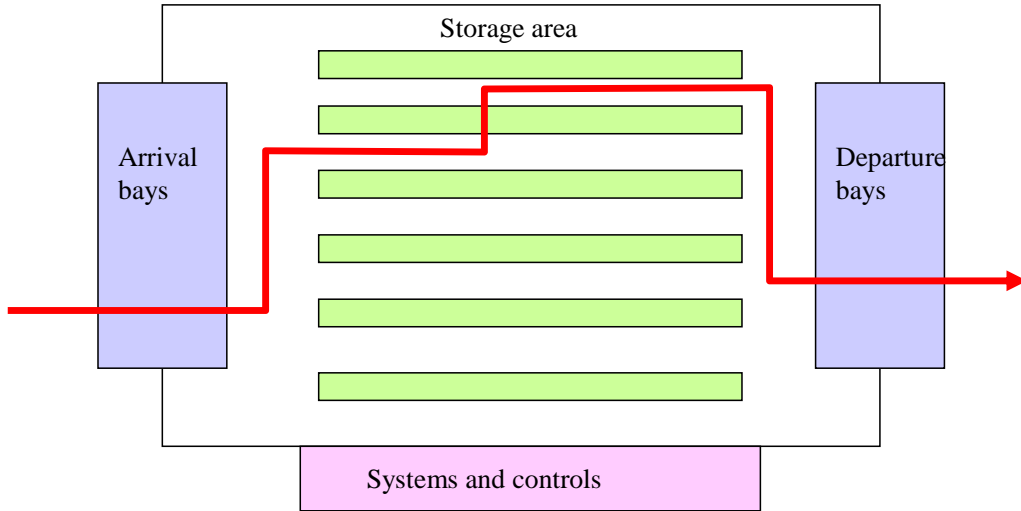


Figure 12.3 Meeting demand with a mixture of public and private warehouses

Figure 12.4 Basic layout of a warehouse



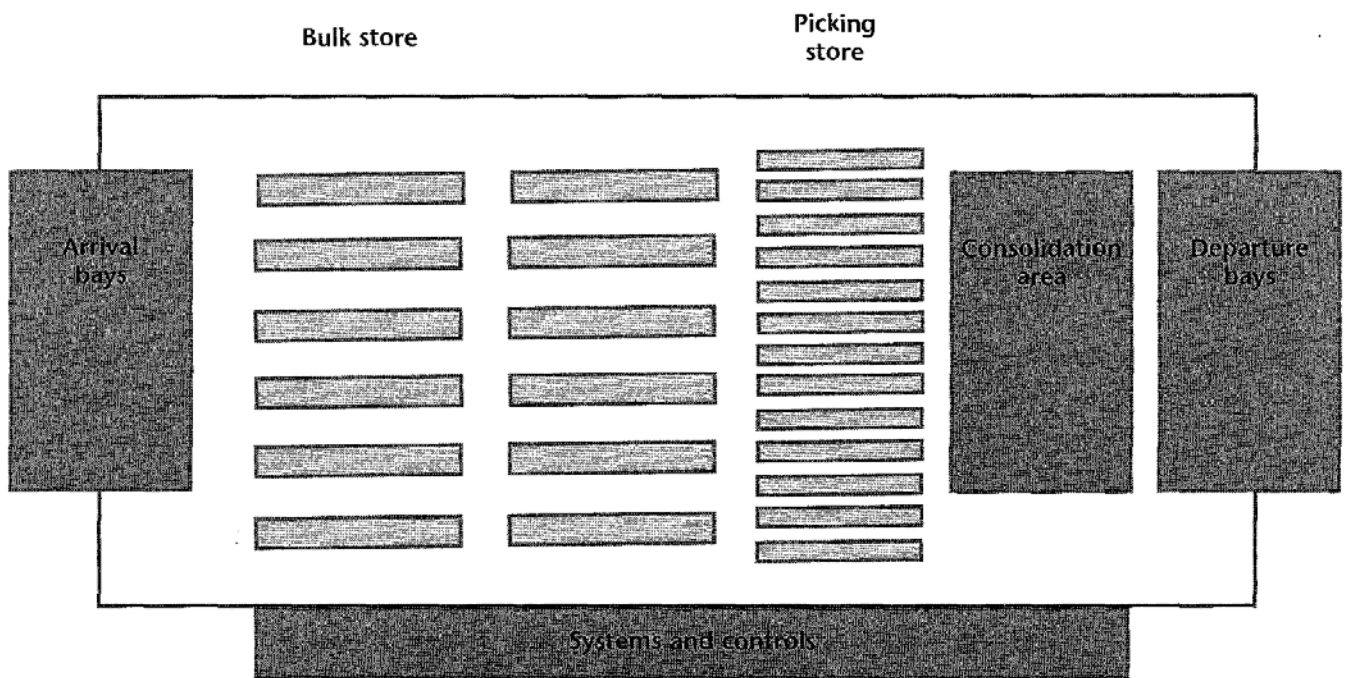


Figure 12.5 A common warehouse layout with two types of storage

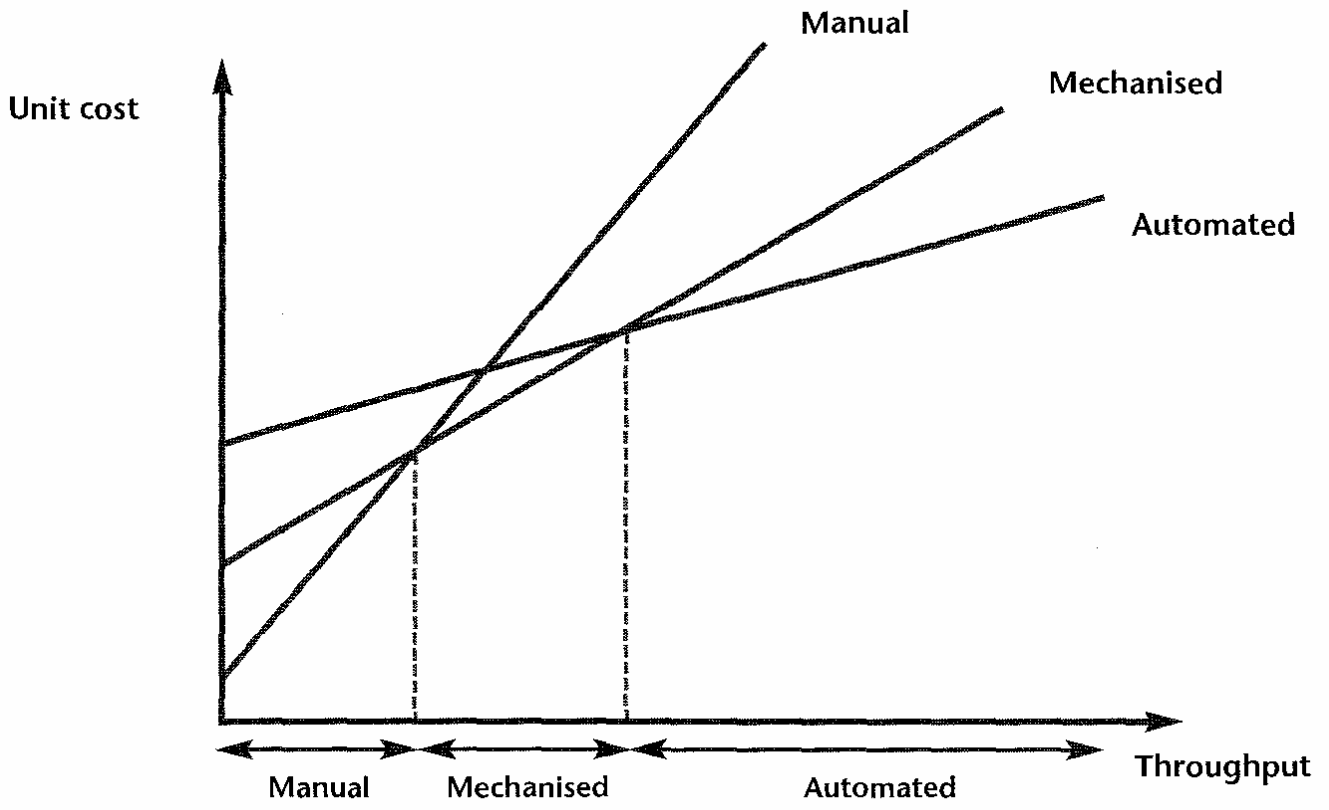


Figure 12.7 Unit costs for different level of automation