

Figure 4.1 Mechanism for implementing the logistics strategy

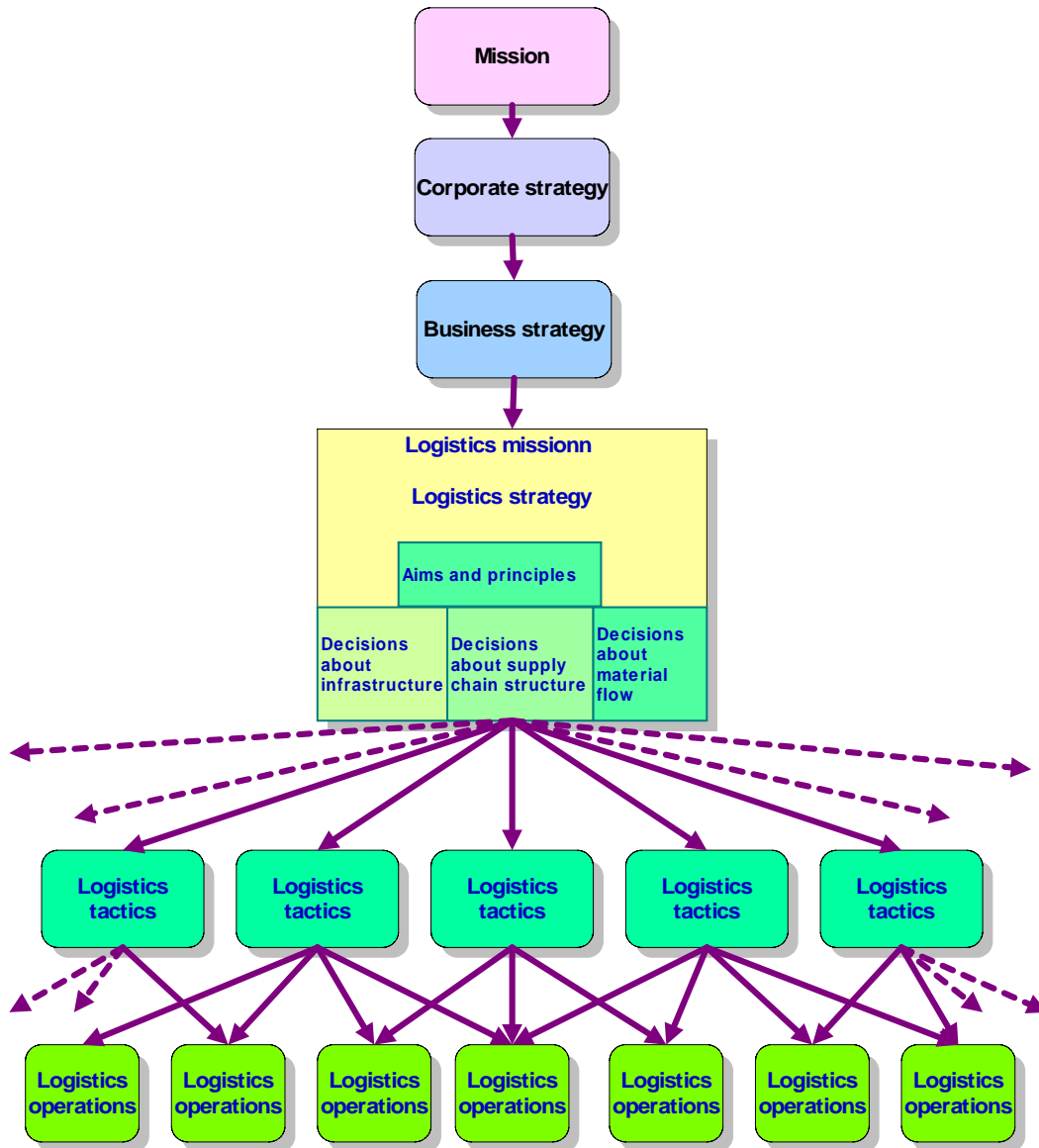


Figure 4.2 Increasing detail of decision in logistics

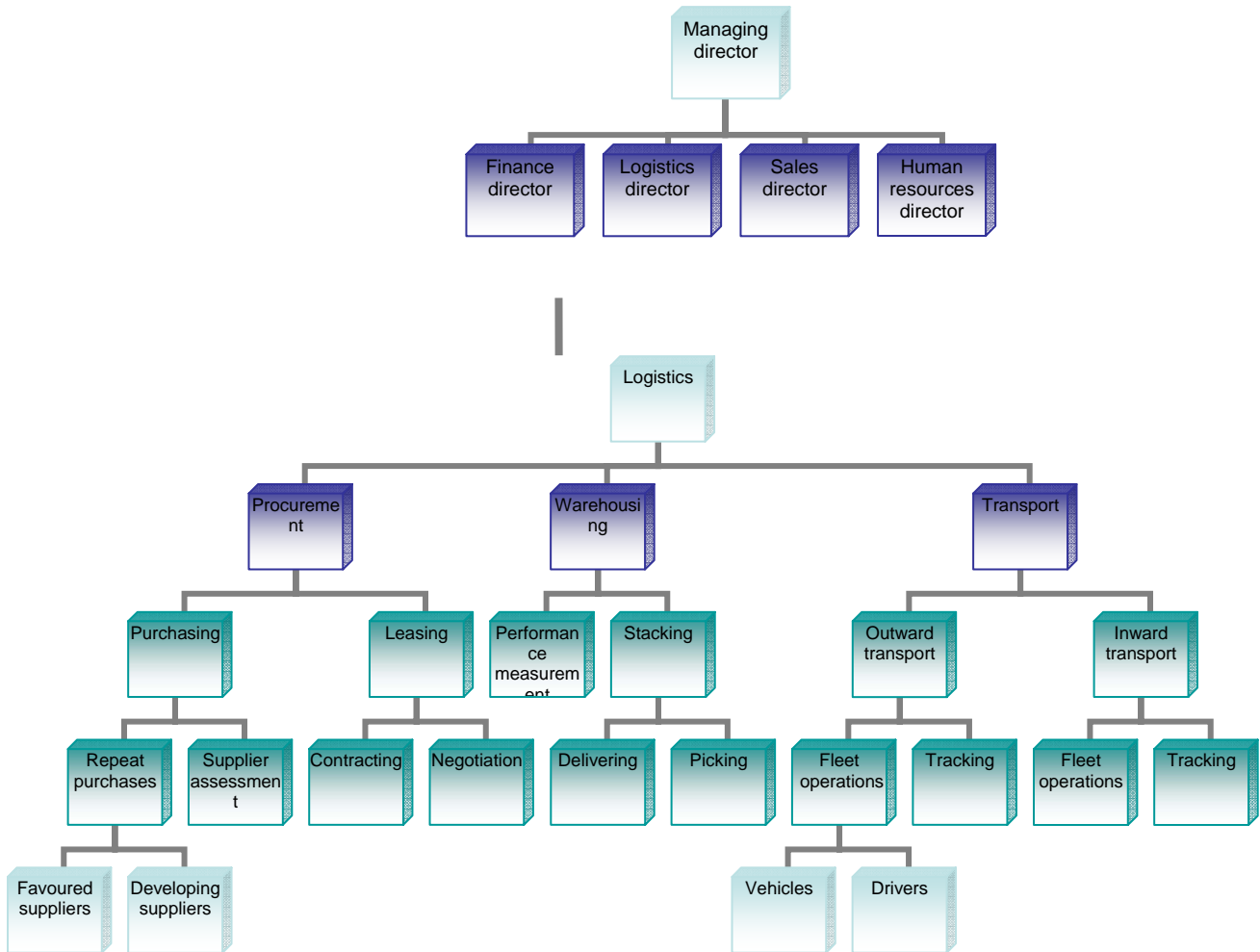


Figure 4.3 Example of a functional organisation structure

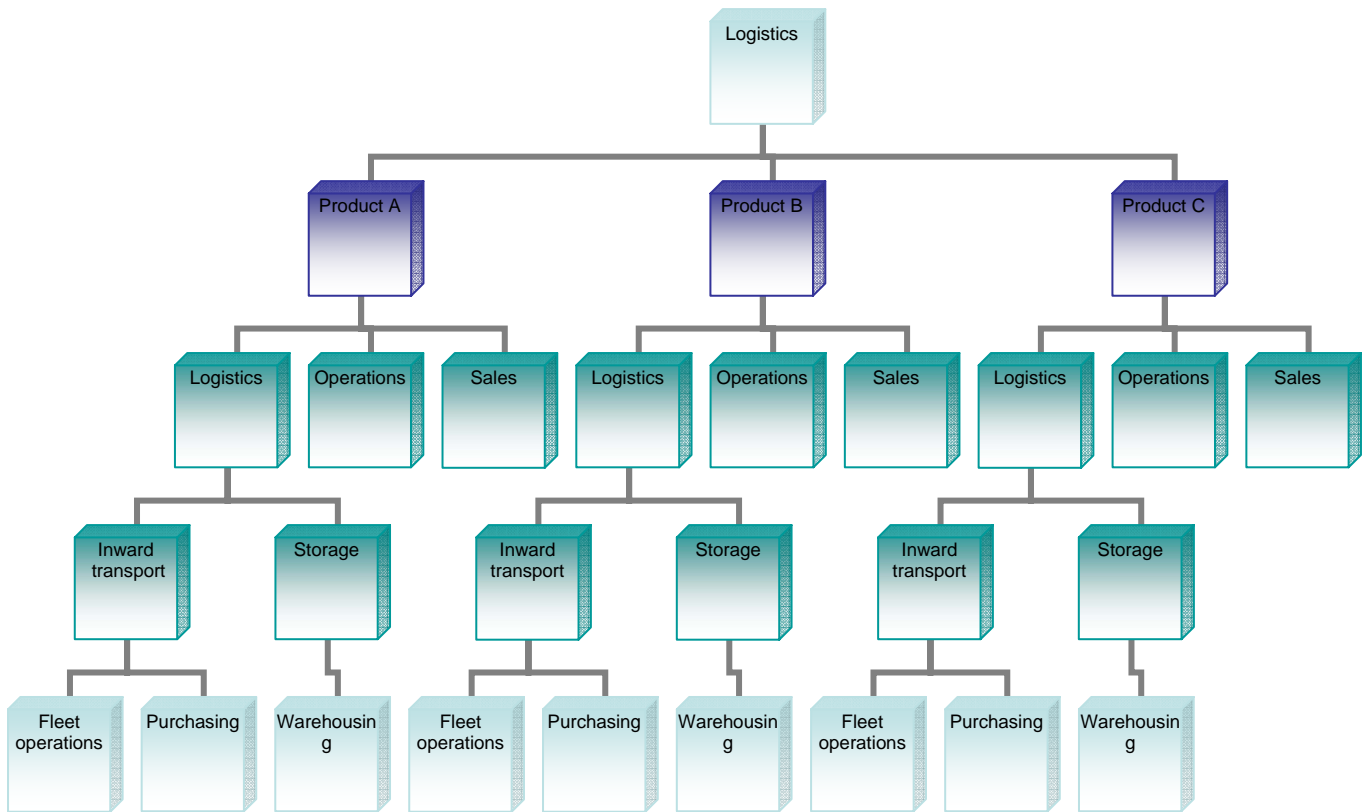
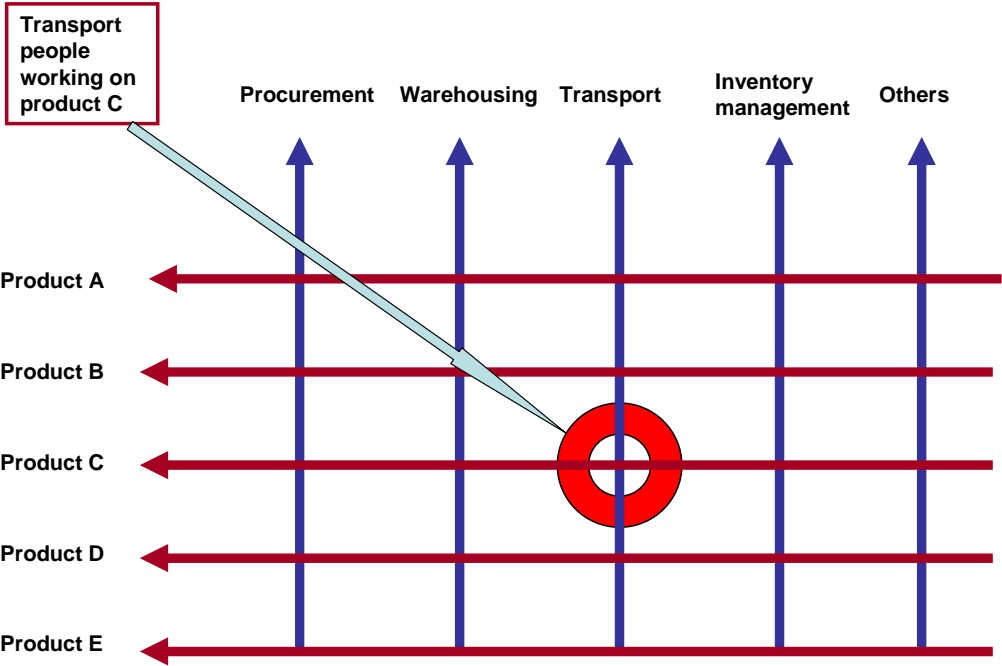


Figure 4.4 Example of a product

Figure 4.5 Example of a matrix structure



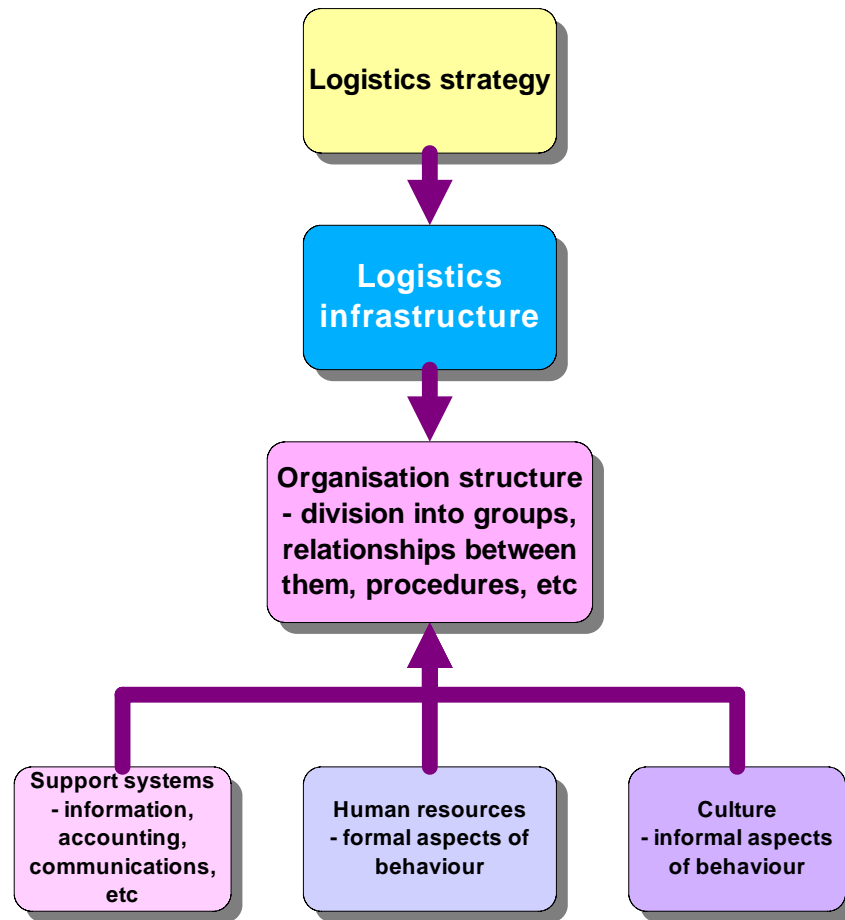


Figure 4.6 Elements in forming an operations infrastructure

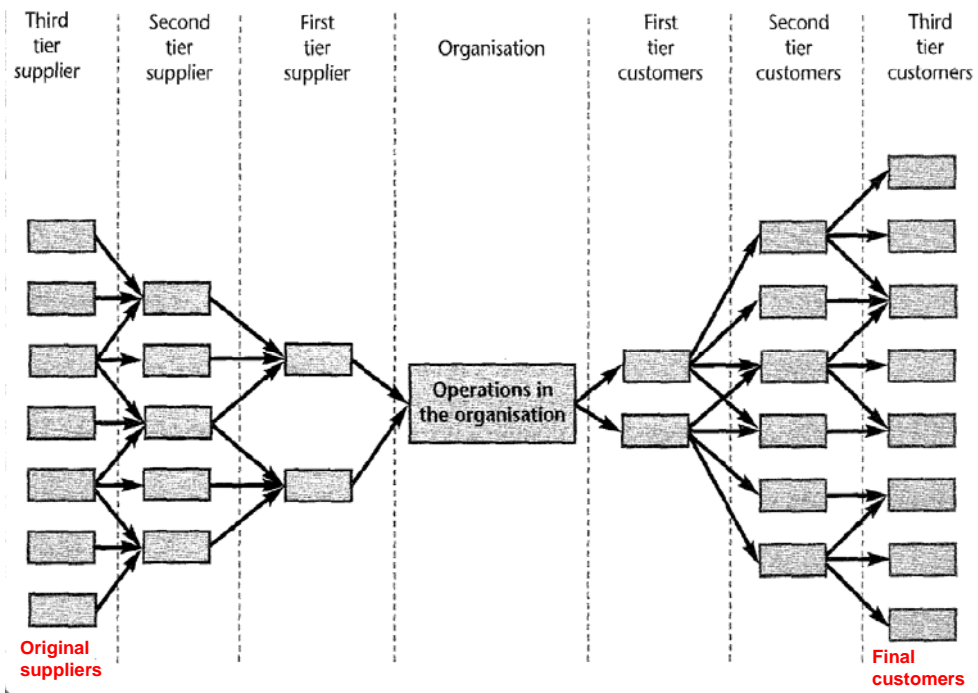


Figure 4.7 Structure of a supply chain

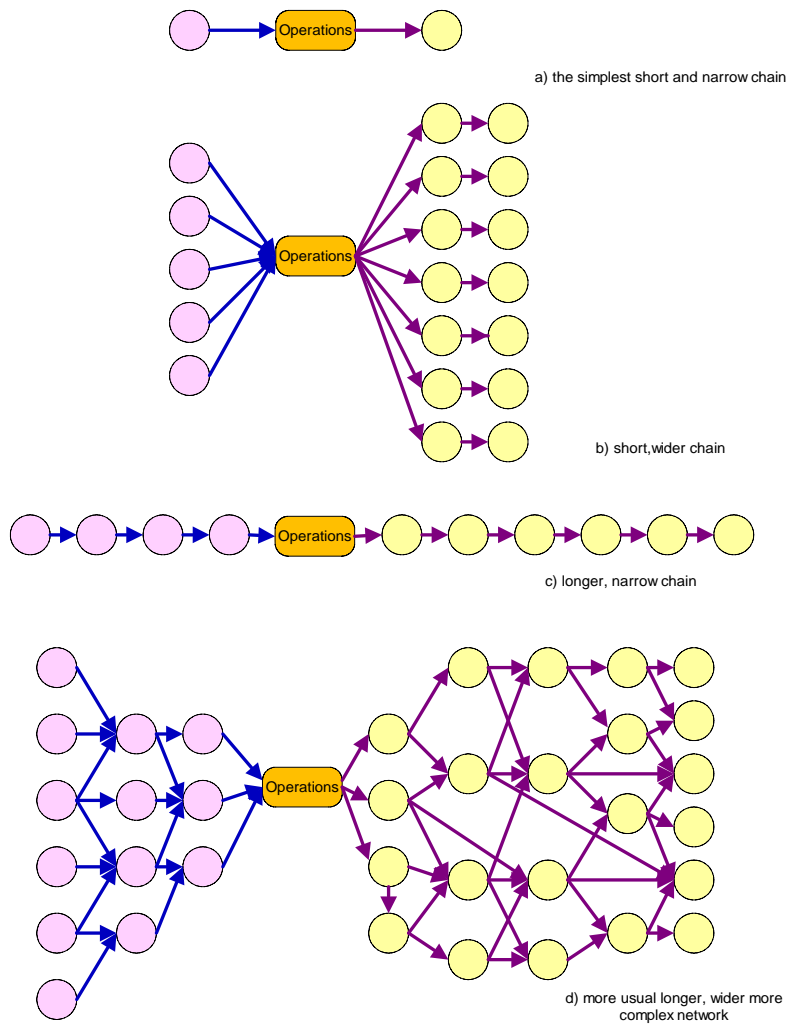


Figure 4.8 Alternate shapes of supply chains

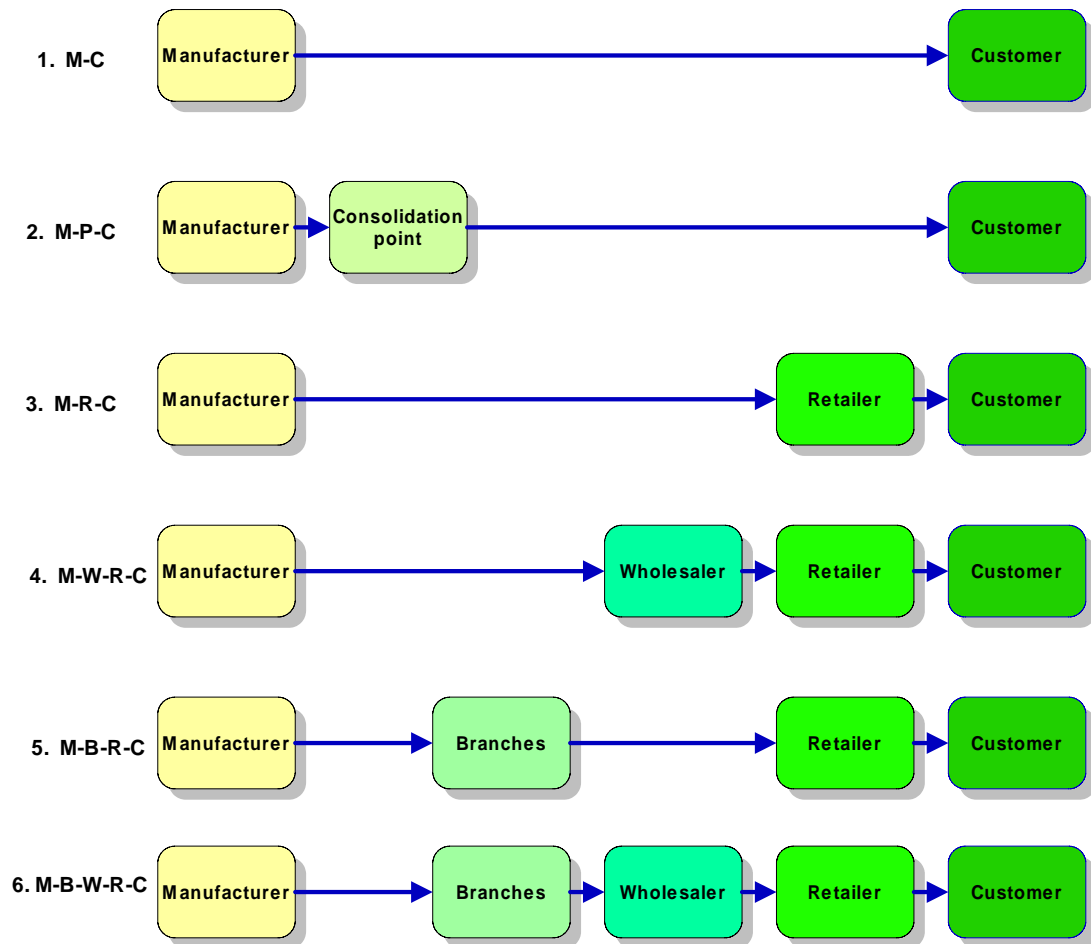


Figure 4.9 Some common patters for distribution

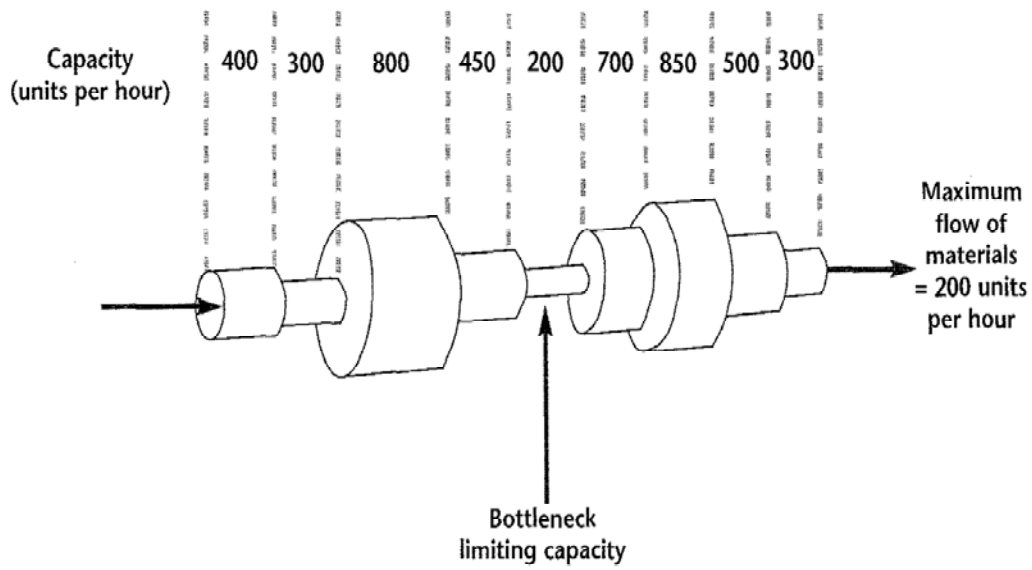


Figure 4.11 Capacity of a supply chain is set by the bottleneck

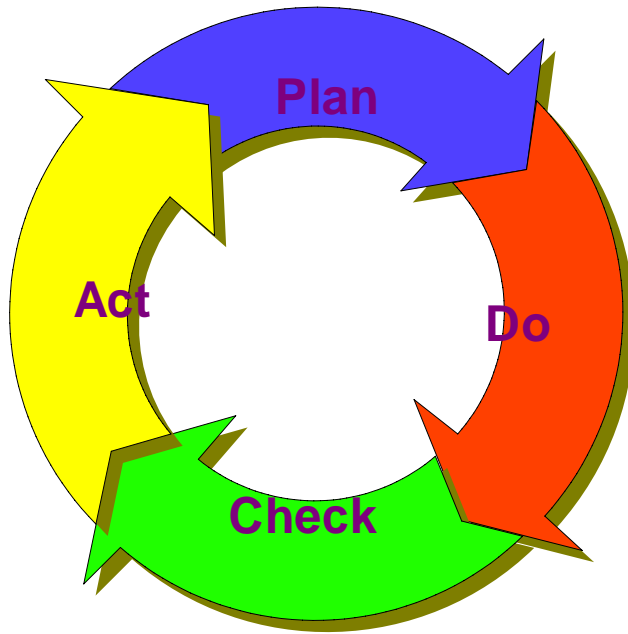
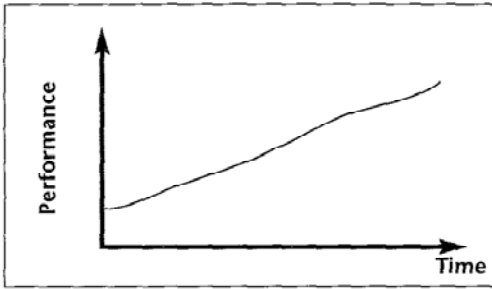
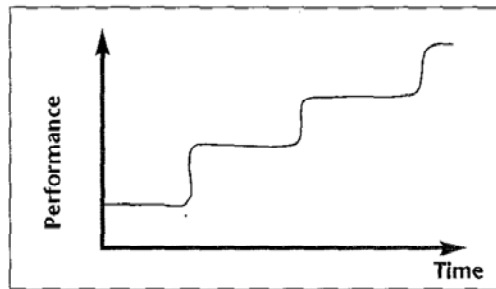


Figure 4.13 Plan-do-check-act cycle for process improvement

(a) Continuous Improvement



(b) Business process re-engineering



(c) Combination of continuous improvement and business process re-engineering

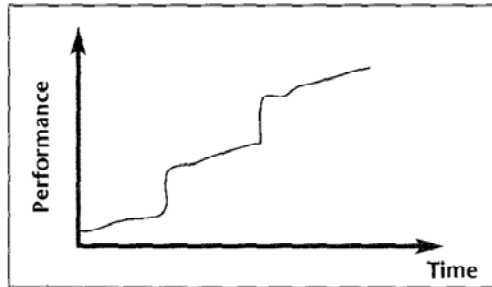


Figure 4.14 Rate of performance improvement