

Figure 9.1 Comparing the stock levels of traditional planning and MRP

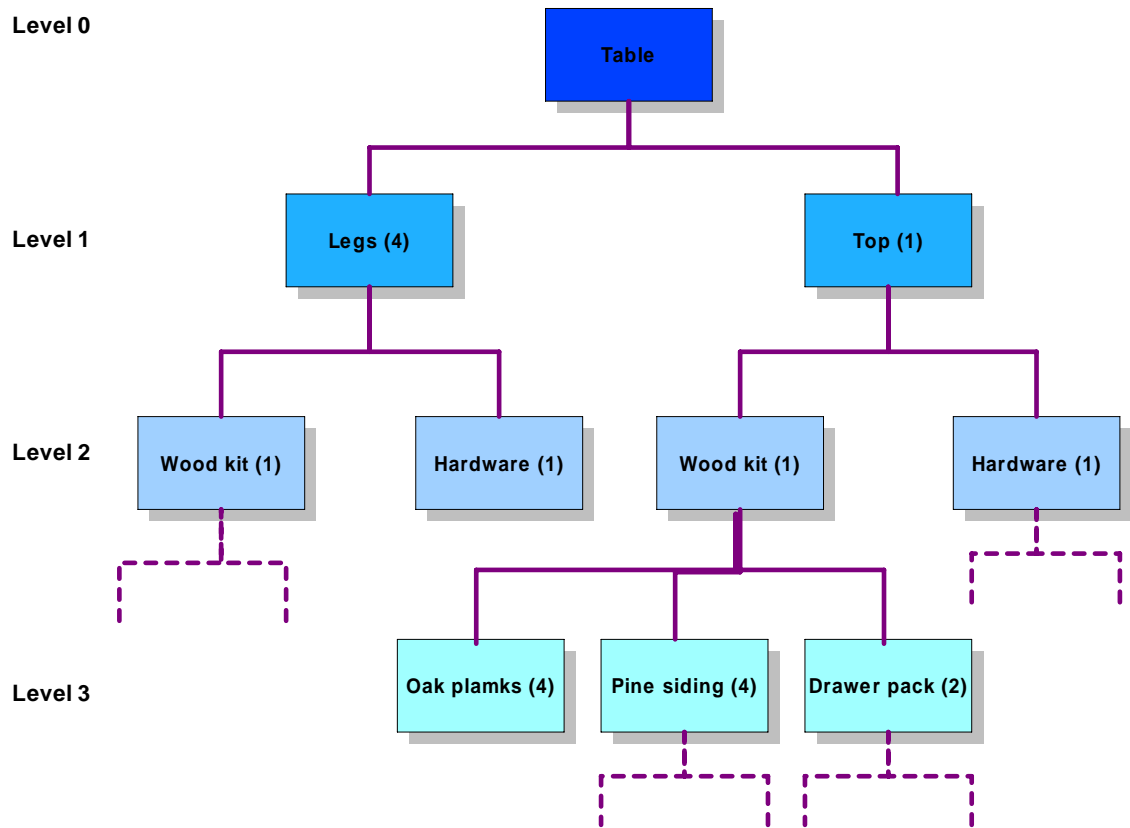


Figure 9.2 Part of a bill of materials for a table

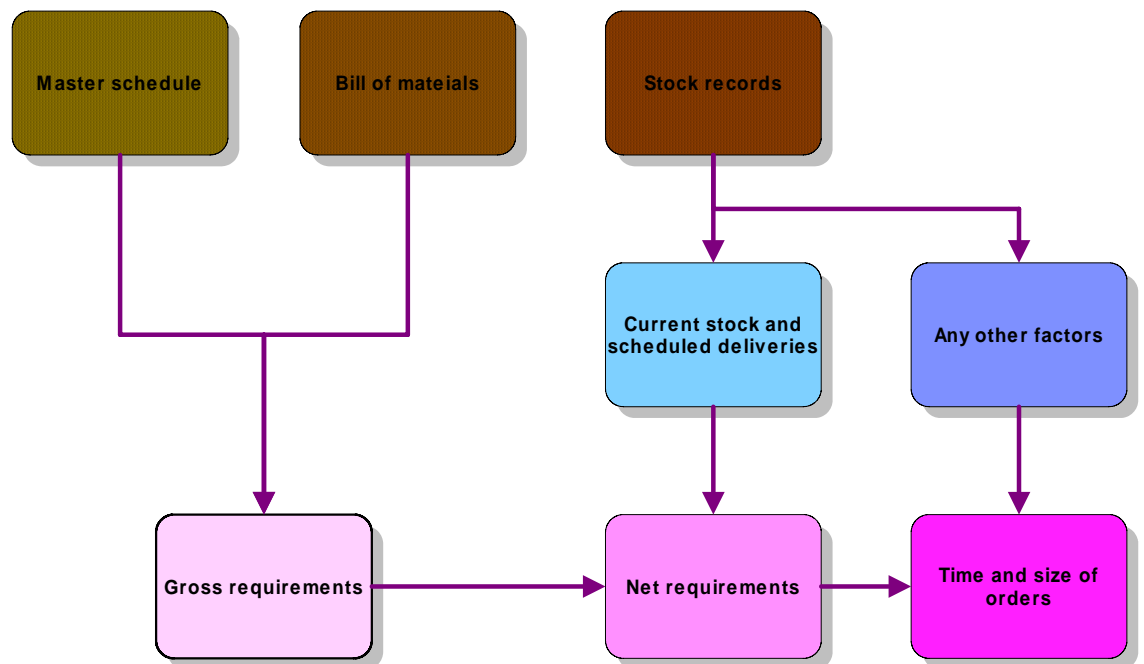


Figure 9.3 Summary of MRP calculations

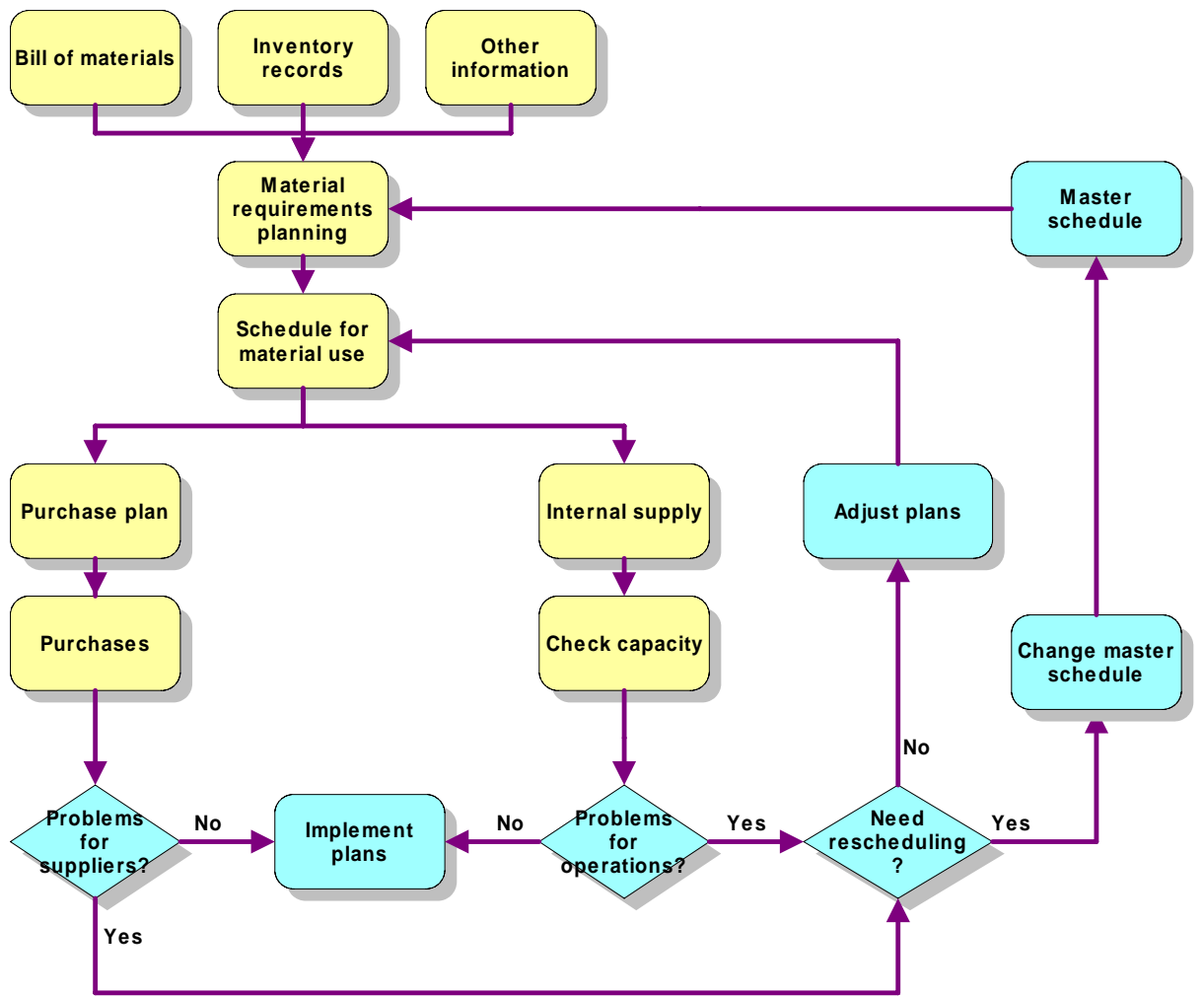


Figure 9.4 A closed-loop MRP system

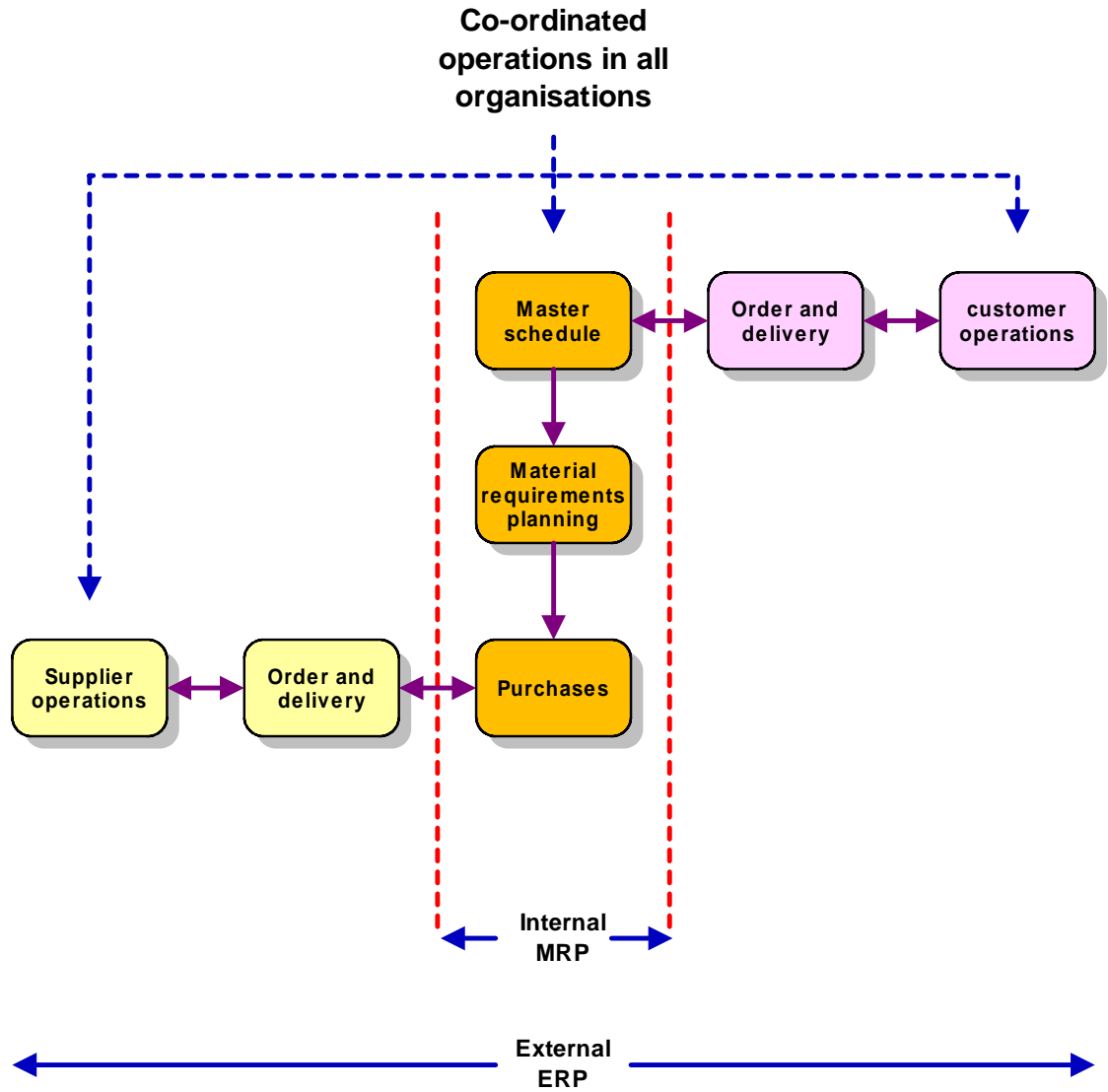
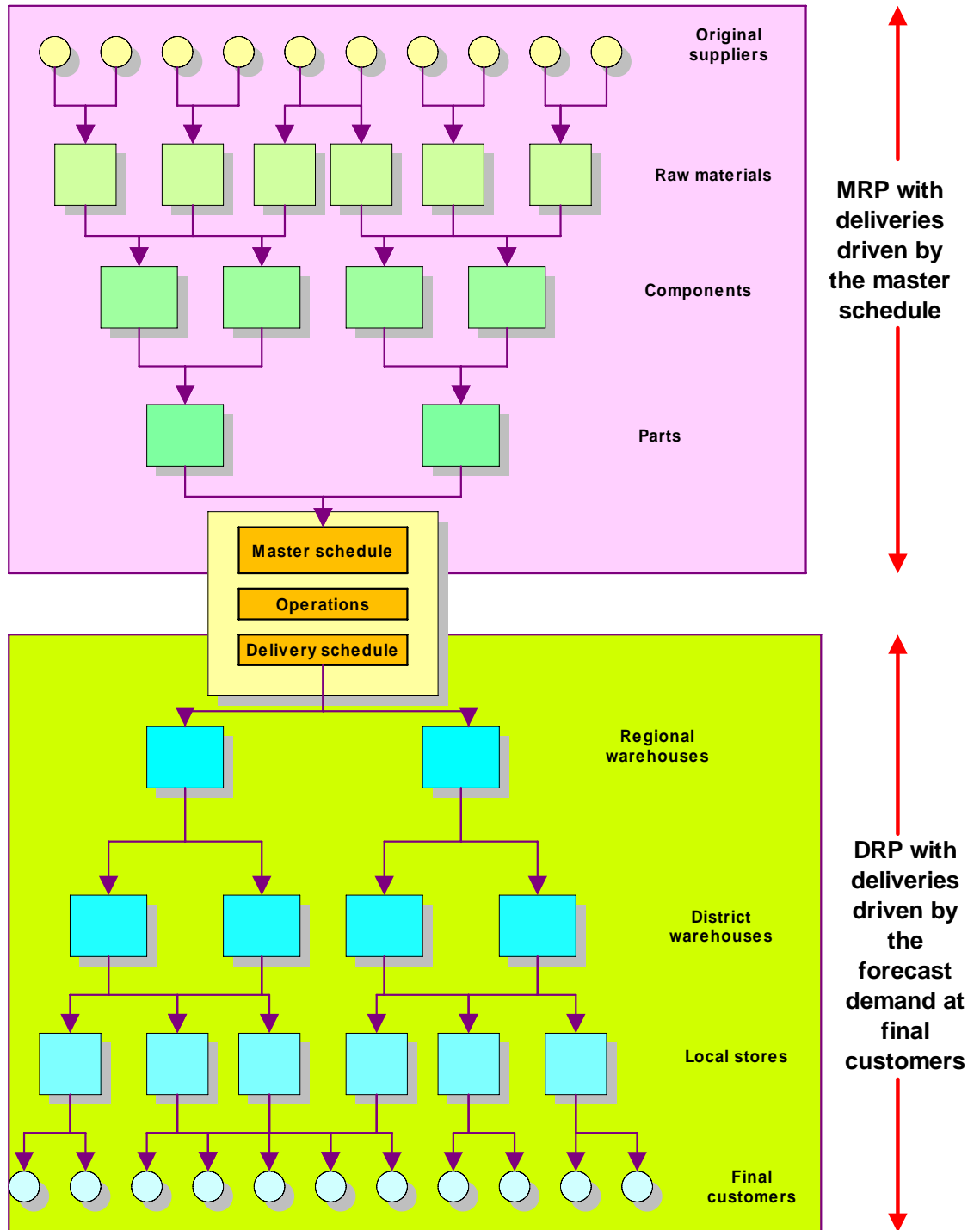
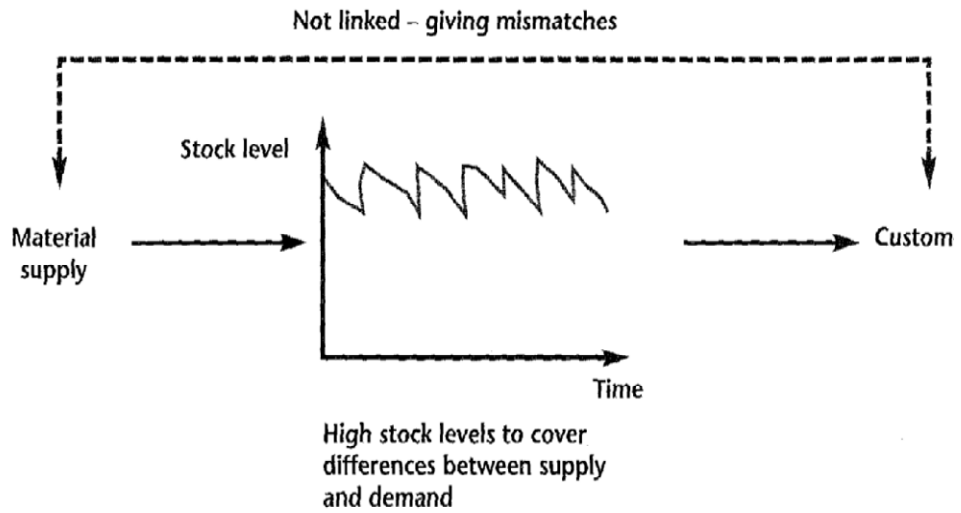


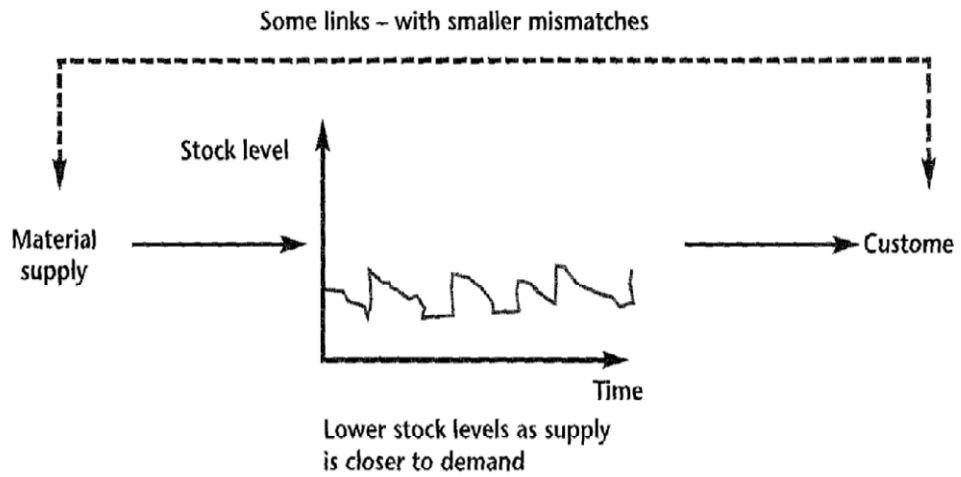
Figure 9.5 Schematic view of enterprise resource planning

Figure 9.6 A combined MRP/DRM system

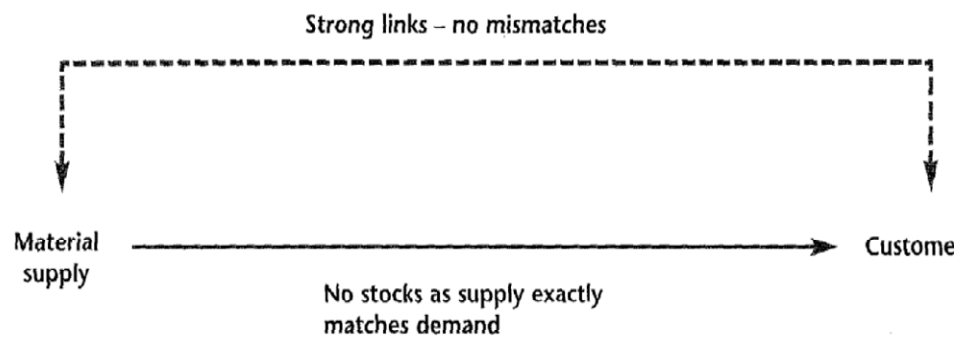




(a) Traditional method of stock control



(b) MRP systems



(c) JIT approach

Figure 9.7 Stock levels with different types of control

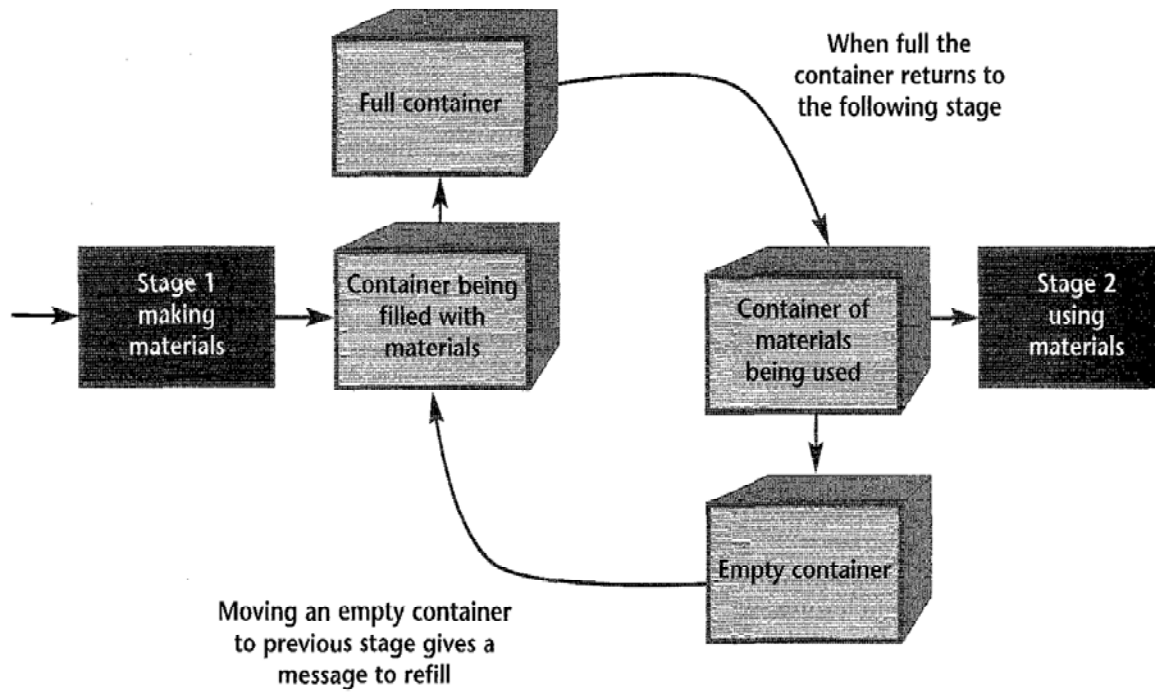


Figure 9-8 The simplest type of message for JIT

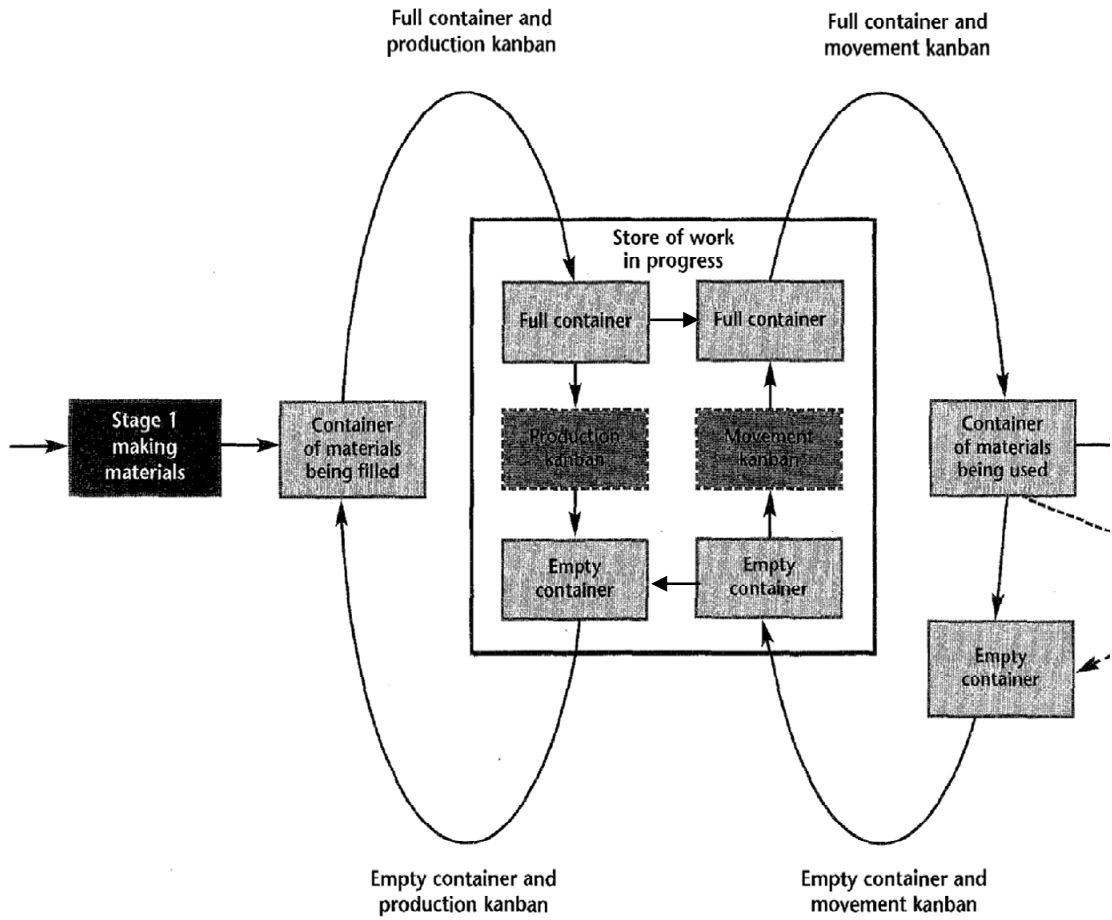


Figure 9.9 A traditional system using two types of kanban

